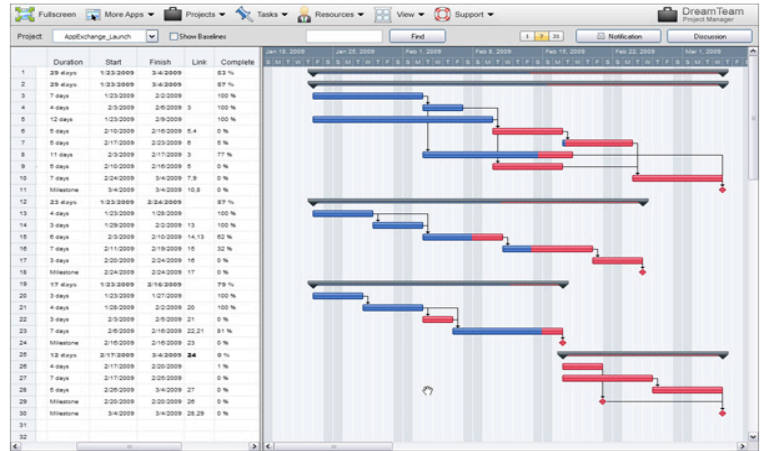


DreamTeam Suite: Essential teamware for corporate clouds

The DreamTeam Suite offers enterprise grade teamware that plugs and plays with your corporate cloud. Currently supported clouds include force.com, Windows Azure, Cisco Connect, Intuit Partner Platform, and Amazon Web Services.

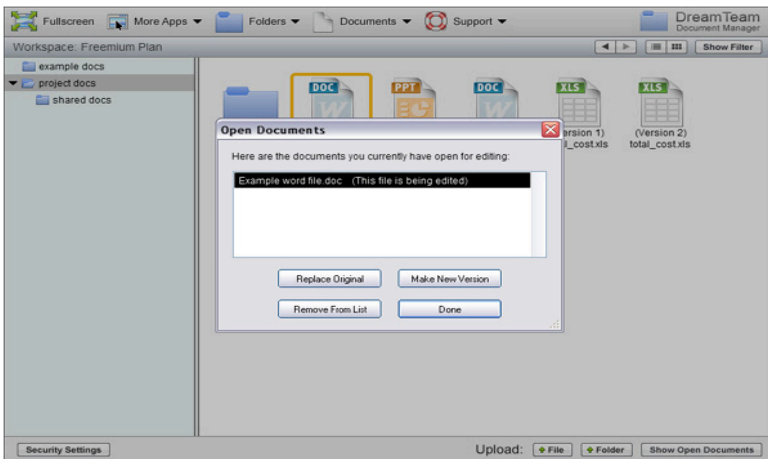
Enterprise Project Management

The DreamTeam Project Manager is Enterprise Project Management for corporate clouds. It is ideal for professionals that require advanced project features including: Gantt charts, timesheets, expense reporting, resource allocation, portfolio management and a host of other best-in-class capabilities. With Microsoft Project import, DreamTeam enables you to easily migrate projects to web spaces.



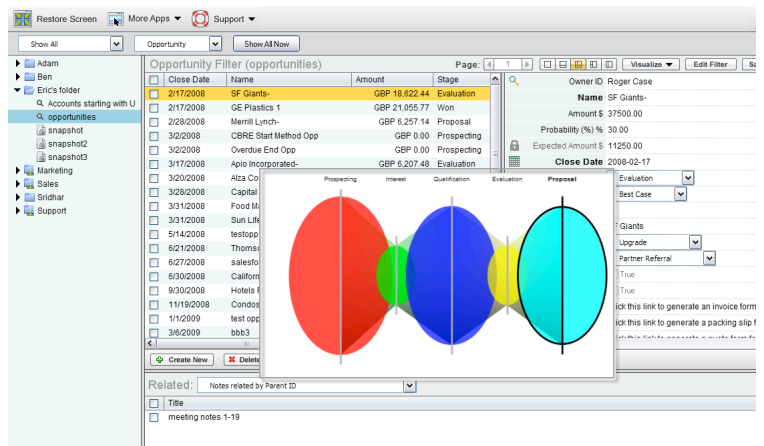
Enterprise Document Collaboration

DreamTeam's Document Manager allows users to store and share documents with colleagues and partners securely in your corporate cloud. It offers a "WebTop" for managing and launching virtual documents in a familiar desktop paradigm. Capabilities include versioning, desktop sync, and double click launch of virtual files using desktop applications.



Enterprise xRM

The TableTop application enables the creation of collaborative data managers with rich reporting, and shareable dashboards. It comes prepackaged with commonly used managers such as Contact, Opportunity, Marketing, and Lead managers. With our innovative excel importer, you can transform local excel files into collaborative CRM/PRM inside cloud workspaces.



DreamTeam Suite at a glance

DreamTeam™

Web based project, document, and data
Collaboration for corporate clouds

project manager

- Enterprise Project management for corporate clouds
- Fully collaborative within and external to your organization
- Robust task management with Gantt chart views.
- Time and expense management
- Resource management
- Comprehensive reporting
- Portfolio reporting
- Microsoft project import/export

document manager

- Web 2.0 document collaboration for corporate clouds.
- Document versioning, check-in, check-out, lock-out
- Synchronization between desktop and web folders
- Auto launch of desktop apps from web files
- Secure web repository for archive, backup
- Frictionless sharing with partners external to your workspace via active links

collaborative data manager

- On-the-fly creation of business information managers (contact, opportunity, case, partner, events..)
- Instant report and dashboard views with pivot charts and drill down.
- One click creation of org charts views, trend views, and 3d pipeline views.
- Included FormFactory App Builder, enables construction of live business forms (quotes, invoices, contracts, account plans, surveys...) auto-populated by business information managers.
- CSV upload turns excel files into shareable db's.
- Hide/Show enables private databases in group environments.

product videos

<http://www.dreamfactory.com/scenario/DreamFactory/Index.html>

For product questions and demo requests, please email DreamFactory Sales at sales@dreamfactory.com or call [1-877-577-3453](tel:1-877-577-3453). For usage questions and suggestions, please contact DreamFactory Support at support@dreamfactory.com or call [1-877-577-3453](tel:1-877-577-3453).