

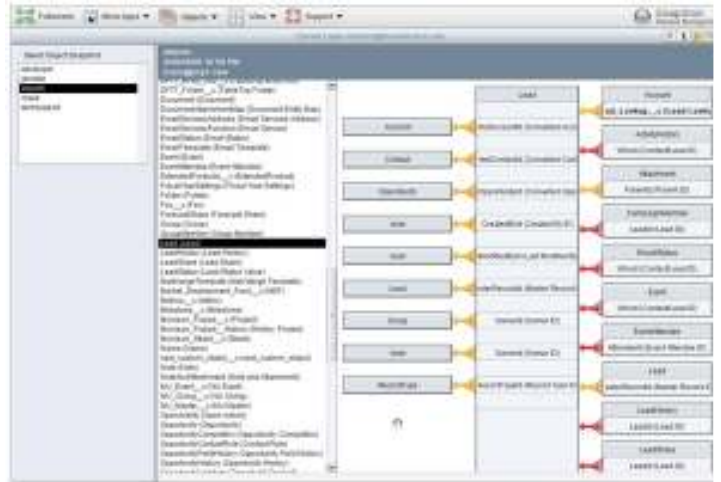
## DreamFactory Utilities: Change management for your corporate cloud

DreamFactory Utilities is a suite of integrated tools to help administrative and operational users manage change in their corporate cloud implementation. The three integrated products offer 360 degree change & data management including:

### Snapshot metadata management

Snapshot allows administrators to manage complex cloud databases (Orgs) without writing a single line of code. Snapshot's comprehensive management console allows operational users to:

- Compare metadata changes between org versions or between orgs
- Automatically push metadata changes between orgs
- Document and monitor org history for compliance

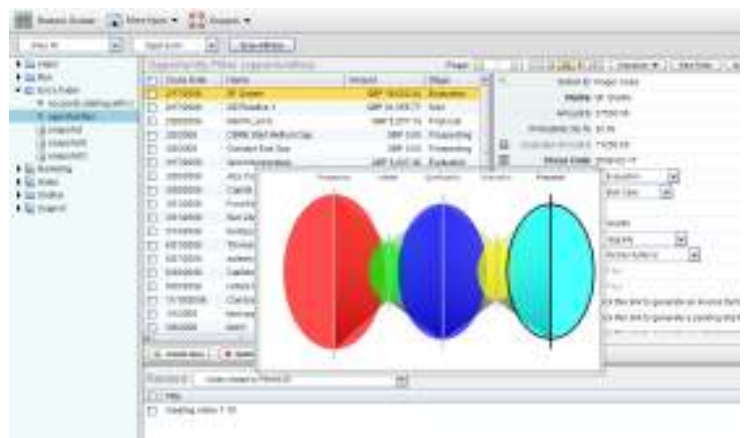


### Monarch data management

Monarch enables the movement of Master data within instances of your corporate cloud or between cloud databases for archival, back-up and merging of data. Data and all of their relationships can be moved in a single push. Currently supported cloud relational databases include force.com, Microsoft Azure SQL, Amazon, Cisco Connect and Intuit Partner Platform.

### TableTop reporting & visualization

TableTop is a rich data visualization and reporting application that allows administrators to browse live, archived, and off-line Orgs. Visualization options include interactive charting with drill down, organization chart views, trend views, and 3D pipeline views.



## Features

SnapShot Change and Release Management (for metadata)		
	Feature	Description
<b>Change/Version management</b>	Compare orgs	Compare time based snapshots of versions within the same org and/or between orgs. The compare feature offers highly visual tools to instantly pin point change within versions and visualize via drill down capabilities.
	BigShot mega capture	SnapShot enables massive metadata capture in a single snapshot.
	Compare assets	Compare an asset or assets between org snapshots in a list or xml display.
	One-click Org backup	Create a back up of your Org for recovery and audit.
	Scheduled snapshots	Automatic creation of asset, profile and object snapshots and backups at predetermined time intervals.
	Relationship palette	One-to-many view of all entities related to a single entity. (e.g. show all relationships to a specific field in my Org.)
	Relationship matrix	Many-to-many view of entity relationships. (e.g. map fields against page layouts to discover field to page relationships.)
<b>Schema Push</b>	Synchronize Orgs	Push changes between orgs (production, sandbox, developer). Update sandboxes without the need for full refresh.
	Menu-based Push (super select)	Category-based asset selection makes creating a push job simple. SnapShot's "super select" automatically adds related assets to the job list so you don't neglect existing dependencies.
	Override	Option to override extraneous references to force a push
	Basic Select	Select specific assets allowing for isolated push.
	Reusable Job Lists	Create a job package and reuse for subsequent and new orgs pushes.
	Incremental Field Push	Push individual fields to any (related or unrelated) Org without having to push the entire Object.
	Simulated push with error preview	Dry run your deployment without making any actual changes before your actual release.

	Feature	Description
<b>Compliance documentation, auditing, and monitoring</b>	Data dictionary	Report on object and field properties and relationships to meet documentation and compliance requirements
	Object relationship report	Tree report of all objects related to a single object, and or objects related in a matrix view.
	Change logger	Logs all changes to an org by admin and provides detailed reports and dashboards.
	Change list report	Generates a list identifying needed changes between two Orgs.
<b>Monarch Data Management (data push)</b>		
<b>Move data</b>	Archive	Archive data and schema to premise based (PC) or other cloud platforms ( Azure, Connect)
	Merge data	Move data and their relationships between orgs for merging of multiple orgs into a single org.
	Migrate data	Move data and their relationships to other cloud computing platforms for migration
	Randomize Data	Scramble selected fields in data push to randomize. e.g. randomize credit card field when pushing during development process.
<b>TableTop (data browse)</b>		
<b>Browse</b>	Browse archived data	Sophisticated client to browse and manage data in live, archived or offline snapshots.
<b>Report</b>	Manage data views for reports and dashboards	Data views are managed in a familiar desktop like folder paradigm enabling the creation of data cockpits (e.g. Sales forecast folder with data views of each region).
<b>Visualize</b>	Visualize as Charts and Tables	One click creation of rich charts from list views.
	Pivot Views	All visualizations allow pivoting from selected fields with built in drill-down.
	Advanced visualization	Advanced visualization includes trend views, pipeline views, and org chart views.
	Share Views	One-click sharing of live data views with users and non-users of salesforce.com