

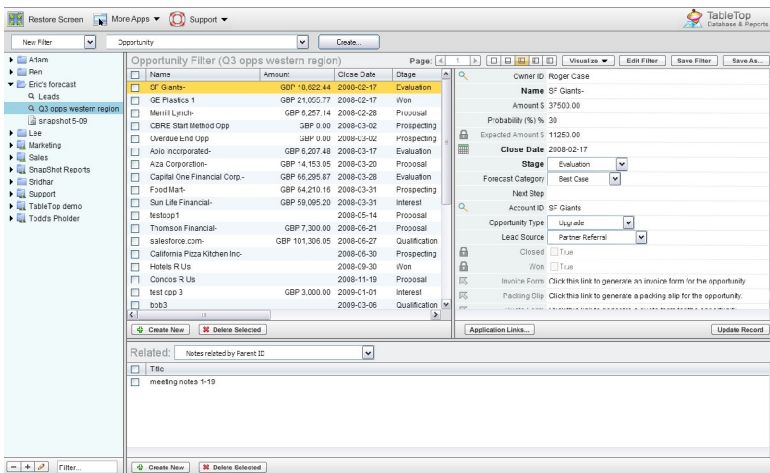
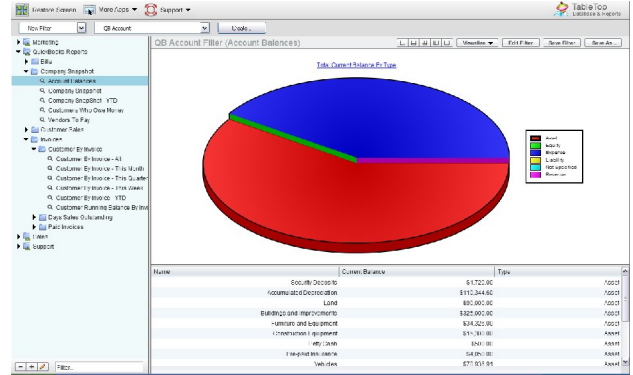


## TableTop for cloud data

TableTop is the first “webtop for cloud data”, unifying advanced reporting, performance tracking, and analysis for the business user. TableTop is 100% native, working with data in your cloud and preserving all data relationships.

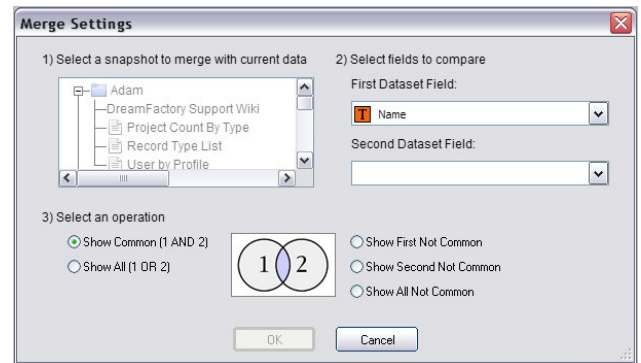
## Advanced reports and dashboards

TableTop creates powerful reports, detailed dashboards, and fully interactive performance trackers with a click of the mouse. Gain instant results with an extensive library of pre-built, business critical reports that natively leverage your cloud data and object relationships. Share live reports with partners with a single click.



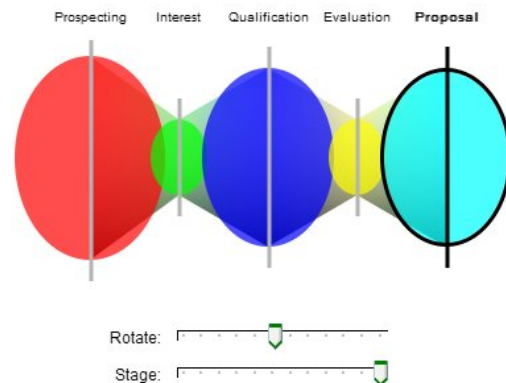
## Collaborative performance tracking

TableTop features collaborative data input, writing directly to your cloud. Rapidly configure fully interactive data managers and save as live views in your webtop to track key performance metrics. For example, executives can create an opportunity manager with team input in a few clicks. Our excel loader allows you to instantly transform flat files into shared databases.



## Analysis

TableTop allows you to make sense of your data with trending, exception reporting, merge views, and cell calculations. Analysis executes “in-cloud”, preserving all data relationships, and eliminating issues resulting from moving data to other databases for processing.



## Advanced visualization

TableTop allows users to rapidly toggle between results, chart views, pivot tables, and advanced visualization. Our advanced visualization mode includes relationship maps (such as org charts) and 3d funnel views with shape and velocity characteristics.

## TableTop editions

	TableTop free **	TableTop Pro
webtop to organize interactive data views (live filters, reports, snapshots, visualizations, etc)	X	X
Native support of cloud data and schema (salesforce.com, Azure, QuickBooks)	X	X
Configurable summary, detail, and related objects views	X	X
Customize field display	X	X
Customize database	X	X
Auto load excel files	X	X
Drill down subsets on graphical views	X	X
Pre-built report templates & info managers (opportunity, lead, etc)	X	X
Write data back to the cloud platforms	X	X
One click charts	X	X
Frictionless sharing of live reports with partners		X
Pre-populate rich FormFactory forms		X
Pivot tables (Matrix, Tree)		X
Trend reports		X
Merge filters (joins)		X
Advanced visualization components (3D pipeline & org chart view)		X
Calculation cells on live data using a spreadsheet approach		X

\*\*available on force.com only

For product questions and demo requests, please email DreamFactory Sales at [sales@dreamfactory.com](mailto:sales@dreamfactory.com) or call (888)-399-3732. For usage questions and suggestions, please contact DreamFactory Support at [support@dreamfactory.com](mailto:support@dreamfactory.com) or call (888)-399-3732.