



Snapshot



Change & Release Management

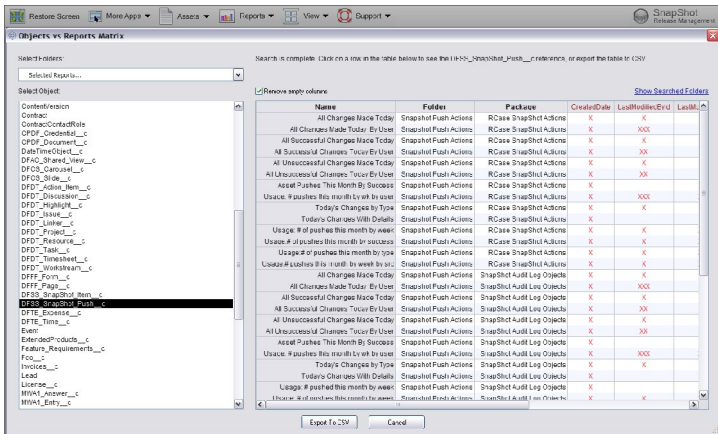
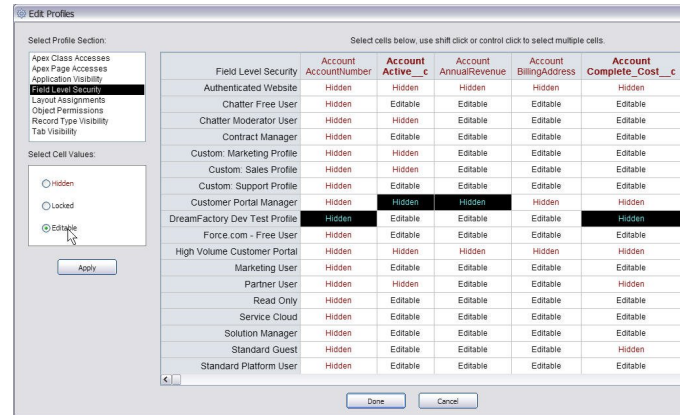
SnapShot allows Admins to natively manage the entire lifecycle of Salesforce Orgs using a "code free" approach.

Complete Org management

Design. A rich editor enables mass updating of schema from a single screen. e.g. modify field level security privileges for multiple profiles from an interactive spreadsheet view.

Promote. Advanced push capabilities include scheduled deploy, multi-cast to multiple orgs, partial push, and category based asset selection.

Monitor. SnapShot's reporting and analysis engine includes compare/diff orgs, document data dictionary of objects and fields, map complex relationships and asset usage reports to eliminate bloat.

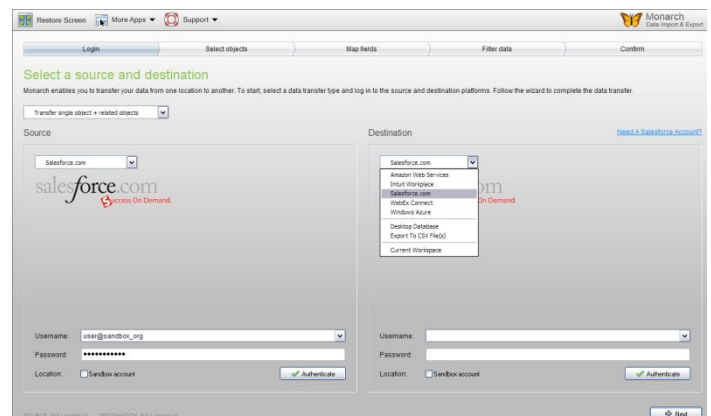


Business Intelligence for metadata

SnapShot's reporting module offers a complete solution for monitoring and documenting all modifications to your Salesforce Org and assists with Sarbanes-Oxley (SOX) compliance and HIPAA regulations. Reports include a data dictionary of objects and fields, map of profiles to page layouts, map of fields to reports, changes by admin, and a host of other key reports.

Monarch data management (Utilities Only)

Monarch enables administrators to easily replicate and merge data between different Salesforce Orgs or between other cloud databases. Data records and related object records can be moved in a single push through an intuitive step-by-step process. Currently supported cloud databases include force.com, Microsoft Azure SQL, Amazon, Cisco Connect, and Intuit Partner Platform.



Features table

SnapShot Change and Release Management (for metadata)		
	Feature	Description
Design	Rich profile editor	Rapidly edit multiple profiles using a spreadsheet view.
	Rich object editor	Create and modify objects from a single screen.
Change Management	Compare orgs	Compare metadata snapshots of the same Org or different Orgs. The compare feature offers highly visual tools to instantly pinpoint version diffs and drill down to details.
	Compare metadata assets	Compare individual metadata assets between snapshots in list or xml format.
	One-click metadata capture	SnapShot enables one-click capture of all metadata in a single snapshot.
	One-click Org backup	Create a back up of your Org for recovery and audit.
	Folder organization	Store SnapShots in a folder heirarchy
	Scheduled snapshots	Automatically create snapshots on a scheduled basis for backup and deployment.
Metadata Push	Synchronize Orgs	Push changes between orgs (production, sandbox, developer). Update sandboxes without the need for full refresh.
	Menu-based push (super select)	Category-based asset selection makes creating a push job simple. SnapShot's "super select" automatically adds related assets to the job list so you don't neglect existing dependencies.
	Override	Option to override extraneous references to force a push.
	Basic select	Select specific assets allowing for isolated push.
	Reusable job lists	Create a job package and reuse for subsequent deployments.
	Incremental field push	Push individual fields to any (related or unrelated) Org without having to push the entire Object.
	Simulated push with error preview	Dry run your deployment without making any actual changes.
	Scheduled deploy	Set a timer to promote change at a scheduled time.
	Multi-cast	Promote change simultaneously in to multiple production Orgs and/or sandboxes

Features table

	Feature	Description
Documentation & Reporting	Data dictionary	Report on object and field properties and relationships to meet documentation and compliance requirements.
	Change list report	Generates a list identifying object and field schema changes between different Orgs.
	Relationship matrix	Many-to-many report of metadata relationships (e.g. map fields against page layouts to view field to page relationships).
	Relationship palette	One-to-many view of all entities related to a single entity (e.g. show all relationships to a specific field in my Org).
	Object relationships report	Entity relationship report of object relationships.
	Profiles vs page layouts report	Matrix report of profiles versus page layouts for any selected object.
	Record type picklist matrix	Matrix report of picklist values versus each record type for the picklist fields of any selected object.
	Dependent picklist matrix	Shows dependent picklist conditions and dependent picklist values for the dependent picklist fields of any selected object.
	Objects in reports	Shows references to objects and fields in Salesforce reports.
	Objects in email templates	Shows references to objects and fields in Salesforce email templates.
	Change logger	Logs all changes to an org by admin and provides detailed reports and dashboards.
	Export	Export reports to CSV, HTML or XML format.
Monarch Data Management (data push) Available in DreamFactory Utilities Suite		
Move data	Merge data	Move data and relationships between Orgs to merge multiple orgs into a single org or test new Org deployments with a consistent data set.
	Randomize data	Randomize selected fields (e.g. randomize credit card field when pushing during development process).
	Archive	Archive schema and data and to premise-based (PC) or other cloud platforms (Azure, Connect).
	Migrate data	Move data and relationships to other cloud computing platforms for migration.

Features table

TableTop (data browse) Available in DreamFactory Utilities Suite		
	Feature	Description
Browse	Browse archived data	Sophisticated client to browse and manage data in live, archived or offline snapshots.
Report	Manage data views for reports and dashboards	Data views are managed in a familiar desktop like folder paradigm enabling the creation of data cockpits (e.g. Sales forecast folder with data views of each region).
Visualize	Visualize live data as charts and tables	One-click creation of rich charts from list views.
	Pivot views	All visualizations allow pivoting from selected fields with built in drill-down.
	Advanced visualization	Advanced visualization includes trend views, pipeline views, and org chart views.
	Advanced actions	Merge data with inner and outer joins, perform exception analysis (e.g. find Accounts without Contacts), and create calculated rows and columns.
	Share Views	One-click sharing of live data views with users and non-users of salesforce.com