

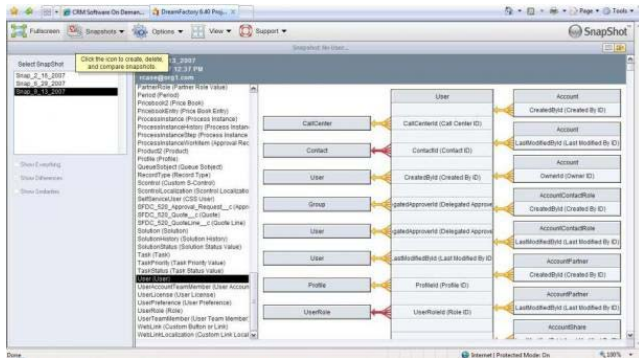


# SnapShot™

## Release Management

### Overview

SnapShot for AppExchange is the one application all Salesforce System Administrators and System Integrators need to have to track and manage critical changes to all field, object, schema and meta-data changes inside Salesforce. SnapShot enables users to take a “snapshot” of the current state of the customizations in a Salesforce ORG or Sandbox. Through DreamFactory’s patented technology, SnapShot provides a highly visual way to compare and track schema changes over time, between different accounts, or between different user profiles. In addition, SnapShot offers a powerful schema “push” feature, which automates change management between Salesforce deployments. SnapShot is an indispensable tool to document changes and modifications in your Salesforce account, and to aid with Sarbanes-Oxley compliance or HIPAA regulations.



SnapShot can be used in several ways:

- **SnapShot for Configuration Backup** – SnapShot can automatically save a picture of the Salesforce schema (standard objects, custom objects, fields, picklists, etc.) periodically to enable Salesforce administrators to look at the exact configuration of the ORG at any point in time.
- **SnapShot for Change Management** – SnapShot is an indispensable tool to help support a secure and stable change management process for any growing organization.
- **SnapShot for Development and Advanced Administration** – Compare configurations between multiple ORGs, compare schema, promote changes

from Development to Test to Production, and use SnapShot’s entity relationship viewer to graphically show Master/Detail and Related List relationships.

- **SnapShot for Compliance** – For public companies required to track and audit changes to business systems, SnapShot enables audit reports that meet these requirements.

### Main Features

- **SnapShot provides graphical information about the database schema inside any Salesforce account.** Changes to an account can be compared over time, providing an important level of security by documenting all account modifications and changes at the schema level.
- **Compare your account before and after any modification or compare different accounts side by side.** SnapShot provides source code control of your Salesforce metadata. This feature provides important feedback for System Integrators about the exact differences between the accounts they are working on as well as for Administrators deploying changes from Development to Test to the Production environment.
- **Audit security settings, field visibility, and object permissions.** SnapShot provides independent verification of user permissions, roles, and profiles. For auditing purposes, take a SnapShot of every customization change made in a Salesforce ORG. All SnapShots are stored and can be easily exported to Excel and printed as an HTML report.
- **Push schema changes between accounts.** SnapShot enables you to replace and merge objects and fields from Development to Test and from Test to Production. This feature automates Salesforce deployments, reduces error, and allows you to roll back to a previous schema version if necessary.

### Learn More

To learn more about SnapShot, visit <http://www.dreamfactory.com/SnapShot/> or contact DreamFactory at 1-888-399-DREAM (3732) or [info@dreamfactory.com](mailto:info@dreamfactory.com). Download a Free 1 Week Trial today.